

2020 Annual Report

The mission of FRI is to engage and empower a community of advocates to advance a safe, beautiful, prosperous, and proud community in Far East Dallas.

Vikki J. Martin, Executive Director
communityconnection@fergusonroad.org
214.324.5116

P.O. Box 570417
Dallas, TX 75357

fergusonroad.org



Table of Contents

To Our Stakeholders 3

Strategic Highlights 4

Operational Highlights 5

FRI Service Area 6

Program Highlights 7–15

Financial Highlights 16

Investors 17

To Our Stakeholders

Working Together to Fight the COVID-19 Pandemic

The Ferguson Road Initiative organization, like most nonprofits, was deeply impacted by the COVID-19 global pandemic in 2020. This year we were forced to pivot our focus and address the challenges presented to our community posed by the virus.

Shortly after the March nationwide shutdown to curb the spread of COVID-19, it became apparent that FRI was needed to help marshal information and resources to our largest and most vulnerable populations, our Latino and African American families, and our senior citizens 65 years of age and older. FRI demographics indicate we have a 66% minority population that resides in FRI's two City Council Districts, Districts 7 and 9. These districts house the largest senior citizen population in Dallas. FRI's boundaries include substantial portions of both Districts 7 and 9.

An analysis of federal health and demographic data determined (3) geographic pockets of need in our Far East Dallas neighborhoods where residents who contract COVID-19 would be more likely to end up in the hospital, and possibly in intensive care requiring a ventilator: Ferguson/I-30, Ferguson/I-635, and Buckner/I-30. According to the CDC, these populations also have the highest risk of diabetes, heart disease and other chronic health problems associated with severe cases of COVID-19.

The high-risk areas identified in this research mainly represent families living in affordable housing apartments in our community. Information about services and resources available to residents is often fragmented and difficult to find. That's why FRI utilized our extensive communication network to reach out to multi-family communities, schools, and faith communities to ensure that our most at-risk families were equipped with the resource information needed during this crisis. FRI provided them with consolidated, easy-to-access information all in one place that directly connected them to our emergency services and food pantry provider partners who serve this community.

In addition to communicating with apartment communities, FRI also reached out to neighborhoods and asked them for their help. FRI shared with the community ways they could get involved with our area service providers

by donating food, mobilizing volunteers, and offering cash contributions so their operations would go uninterrupted and thus continue to provide emergency services that would keep families fed and prevent evictions that might lead to homelessness.

Dallas COVID-19 recovery required an all-hands-on-deck approach as we funneled information services to our network of 37 diverse neighborhoods, 50 apartment complexes, 2,000 businesses, 17 schools, dozens of nonprofits, and more than 30 faith communities. FRI continued to be the go-to agency working to ensure vulnerable families would not be left behind.

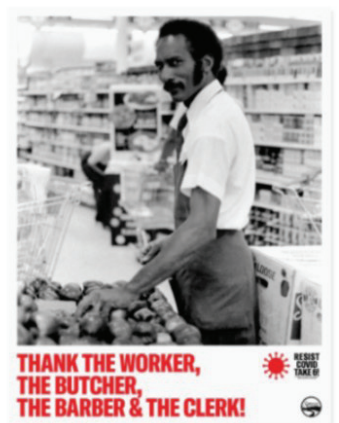
Although COVID-19 caused FRI to shift our direction and address fundamental needs in our community, we continued to move forward with our community-building projects finally being realized after decades of work and for which our community has generously supported:

- White Rock Hills Park (under construction)
- Trinity Forest Spine Trail (construction to begin, 2021)
- Intersection improvements at Ferguson/Lakeland and Ferguson/Highland (construction to begin 2022 and 2024)
- Ash Creek Trail (funded, design to begin 2023)
- White Rock Hills Recreation Center (Future)

Vikki J. Martin, Executive Director
Ferguson Road Initiative



**PLEASE KEEP
YOUR DISTANCE!**



**THANK THE WORKER,
THE BUTCHER,
THE BARBER & THE CLERK!**



FRI partnered with a national program, Resist COVID/Take6! to educate our community on COVID-19 safety precautions

FRI continues to demonstrate our motto: *Working Together for the Greater Good.*

Strategic Highlights

Ferguson Road Initiative (FRI) is a 501(c) 3 nonprofit, community-based, umbrella organization. Founded in 1998, the primary operations of FRI at that time were to address the escalating crime and violence poisoning our community. We were awarded (2) \$1MM federal grants from 2000-2011 from the Department of Justice to create strategies, in partnership with local law enforcement, to reduce crime and promote public safety.

In 2011 FRI launched a membership program, thus becoming a self-sustaining organization supported by our members and philanthropic organizations. As this grant expired, FRI reported that overall crime was down by 25% and violent crime by 61% in targeted areas.

Additionally, neighborhoods were unified, growing from (5) organizations to more than (35). FRI efforts worked to identify the gaps in social services in the community and has continued to be successful in bringing in more resources to serve our community.

Since 1998, community empowerment has helped net more than \$40MM in capital bond programs resulting in a new library in 2012, a new park and other amenities on the horizon. Quality economic development began to return to our community once crime was addressed. Since our formation we estimated more than \$250MM has been invested in new economic development projects in Far East Dallas.

Our success results from partnerships with local, state, and federal government, neighborhood and Crime Watch groups, local businesses, schools, foundations, and faith communities. FRI's unique ability to mobilize and identify community leadership accounts for the continued drop in crime, some as much as 40%, in targeted areas. Local nonprofits are key partners with FRI and we work to help facilitate resources through them to our community. Together we are mastering the art of utilizing the skills and talents of our volunteers and civic leaders and discovering entrepreneurial ways to reshape and restore our community.

FRI serves as the community ombudsman, convening meetings and facilitating consensus. Our ability to provide outstanding methods of communication, connection, leadership, and advocacy keep our neighborhoods strong, thus allowing us to actively grow the economy and unify, mobilize, and lead the businesses, faith communities, schools, and people in our community!

VISION	Far East Dallas is strong and vital!
MISSION	Engage and empower a community of advocates to advance a safe, beautiful, prosperous, and proud community in Far East Dallas.
VALUES	INTEGRITY FRI integrates ethical values into the way we conduct ourselves. This demands absolute honesty and trust with one another.
	COMMUNITY We believe that one person can make a difference and that together we can improve the quality of life for people in our community
	STEWARDSHIP We take good care of the resources entrusted to us and properly utilize and develop the talents of our staff and members.
	LEADERSHIP We act courageously and take responsibility for our choices and their consequences and persevere through challenges and barriers.
	RESPECT We honor individuality and demonstrate compassion and respect for ourselves, others, and those with whom we do business.

Operational Highlights

FRI BOARD OF DIRECTORS

OFFICERS

Dan Ortman

President
Forest Hills Neighborhood Association
Resident

Bill Coleman

Secretary & President Emeritus
Resident

Christopher Jackson

Vice-President
Wynne-Jackson, Inc
VP Development

Becky Reed

Treasurer
Lone Star Credit Union
President

MEMBERS AT LARGE

Daniel Clayton

Clean Color Digital
Business Owner

Gary Hasty

Heroes House, Veteran Housing
Business Owner

Pilar Johnson

Frost Bank
Consumer Residential Lending Representative

Shawn Lovelady

City Hospital @ White Rock
COO

Matt Nicolette

Lakeland Hills CW
Resident

Christopher Rebuck

Bishop Lynch High School
President

Dolores Sosa Green

Casa View Haven Neighborhood
Resident

John Van Buskirk

Claremont Addition Neighborhood Association
Resident

FRI STAFF

Vikki J. Martin

Executive Director
(Part-Time)

JBH Communications

Web Manager
(Contract)

Mari Madison

FRI Days News Magazine
(Contract)

Andrea Hernandez

Membership Administrator &
Special Events Coordinator
(Part-Time)

Kerry Goodwin

Newsflash, E-Blast & Social Media
(Part-Time)

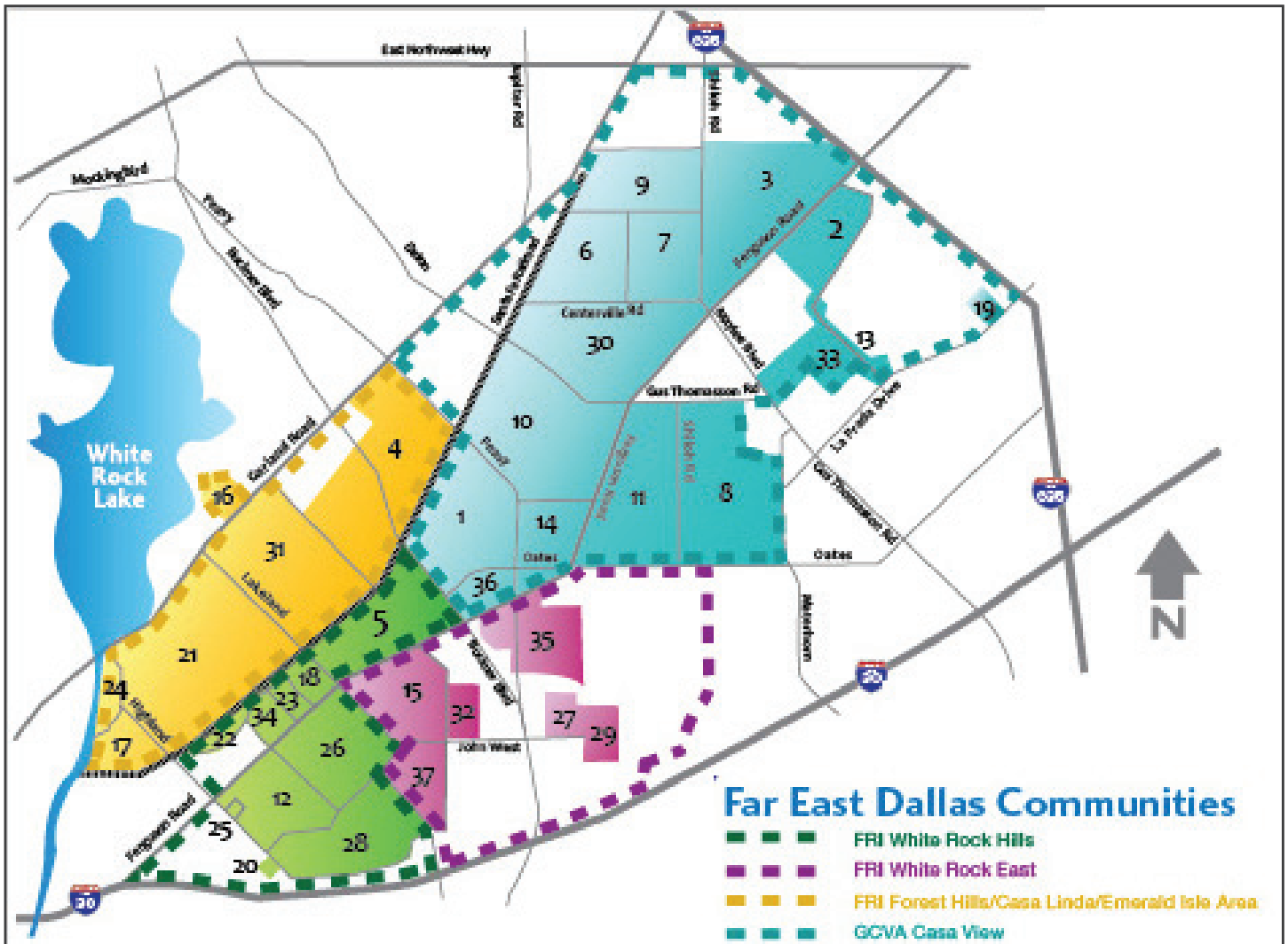
Maria Valenzuela

Office Manager
(Part-Time)

Gary E. Lawler

Special Projects
(Contract)

FRI Service Area



Far East Dallas Neighborhoods

- | | | |
|--------------------------------------|---------------------------------|-----------------------------------|
| 1. Alger Park/Ash Creek NA / CW 1153 | 14. Crestview Park NA | 27. Hillview Terrace NA |
| 2. Braeburn-Glen CW 1132 | 15. Eastwood Hills NA | 28. Lakeland Hills CW 1201 & 1204 |
| 3. Briarwood NA & CW 1258 | 16. Emerald Isle NA | 29. LightPointe Place HOA |
| 4. Casa Linda Estates NA | 17. Enclave at White Rock HOA | 30. Little Casa View |
| 5. Casa Linda Forest NA | 18. Estates at Forest Hills HOA | 31. Little Forest Hills NA |
| 6. Casa View Heights CW 1129 | 19. Fairway Estates HOA | 32. Skyline Heights CW |
| 7. Casa View Heights CW 1130 | 20. Forest Creek OA | 33. St. Andrews CW |
| 8. Casa View Heights CW 1156 | 21. Forest Hills HOA | 34. Stonegate @ Forest Hills |
| 9. Casa View CW 1115 | 22. Forest Meade HOA | 35. Truett CW 1180 |
| 10. Casa View Haven NA / CW 1135 | 23. Forest Oaks NA | 36. White Rock Forest NA |
| 11. Casa View Oaks NA | 24. Highland on the Creek | 37. White Rock Village CW 1202 |
| 12. Claremont Addition NA / CW 1199 | 25. Highlands Apartments CW | |
| 13. Club Manor NA | 26. Hillridge CW 1198 | |

Program Highlights

Together Everyone Achieves More!

FRI takes a holistic approach to community development. To advance Far East Dallas as a safe, beautiful, prosperous and proud community, we engage residents and businesses in activities that are important to them. Our seven programs offer volunteer opportunities for people of all ages and abilities.



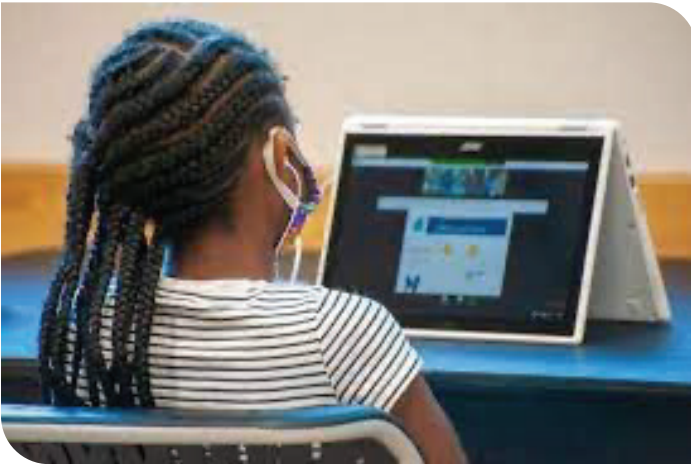
Program Highlights

ADVOCACY

Goal

Develop partners to deliver programs and services that improve quality of life in Far East Dallas neighborhoods.

Outcomes



Reading Partners provided remote learning this year

FRI continues our work with Bayles Elementary School, helping to facilitate education-related partnerships that support and enhance academic learning. This year, despite remote learning due to the pandemic, FRI continued to recruit tutors for Reading Partners of North Texas, a literacy nonprofit organization and helped connect a new education partner to Bayles, The Artist Outreach.

- Reading Partners reports that in March of 2020, before schools were closed due to COVID-19, (19) students at Bayles had mid-year assessments completed. Of those tested, 68% had met their End of Year Primary Literacy Growth Goal.
In response to COVID, Reading Partners created and launched a virtual tutoring program, Reading Partners Connects. Reading Partners Connects took their traditional, in-person curriculum and converted it to an online format, allowing remote volunteers to connect with students in a safe way and still provide one-to-one, individualized instruction. Reading Partners began enrolling students in this program in the fall of 2020 and continued to use it even after some schools opened to volunteers. Reading Partners also launched a family engagement plan, providing resources to families to support literacy outside of school.
- FRI also helped recruit a new nonprofit learning partner for Bayles, The Artist Outreach (TAO). TAO is an innovative program using the creative arts to empower, innovate and

educate. In the first year of this pilot program TAO served (85) unduplicated 1st grade students over a 15-week period. The program is scheduled to continue into 2021–2022.

- FRI was responsible for the advocacy involved to get the White Rock Hills Library placed on city bond programs in 2003 and 2006. Opened in 2012 to much fanfare, our library was closed for most of this year during the pandemic. However, in October they began providing curbside service.
- FRI participated in and helped communicate the Read Across America book drive, hosted by FRI partner Monster Yogurt. Every year this event provides hundreds of books to disadvantaged students who attend schools in Far East Dallas.



Books donated by Monster Yogurt to area DISD schools in support of Read Across America

Program Highlights

COMMUNICATION

Goal

Communicate vital information regarding strategic progress and access to quality programs and/or services.

Outcomes

The communication services provided by the Ferguson Road Initiative were critical to families made most vulnerable by the COVID-19 crisis. When the March shelter-in-place order was issued in Dallas, we realized our communication platforms would be an essential service needed by our Far East Dallas area emergency service providers. On May 28, 2020, FRI leadership stepped-up and coalesced a meeting with our (5) key nonprofit emergency service provider partners:

- Mission East Dallas (Medical, Dental, Behavioral)
- Owenwood Farm & Neighbor Space (Diaper/Food Distribution)
- St. Vincent De Paul (Food, Financial, Mini-Loan, Pharmacy)
- White Rock Center of Hope (Food, Financial, Clothing)
- Wilkinson Center (Food, Financial, Job Training)

The purpose of this meeting was to introduce agency leaders to one another and to create a summer pilot Communication Program to address the emergency needs of residents impacted by the Coronavirus in our community. From this initial meeting, it was decided to utilize FRI's extensive communication networks to connect families who need emergency services with the appropriate providers.

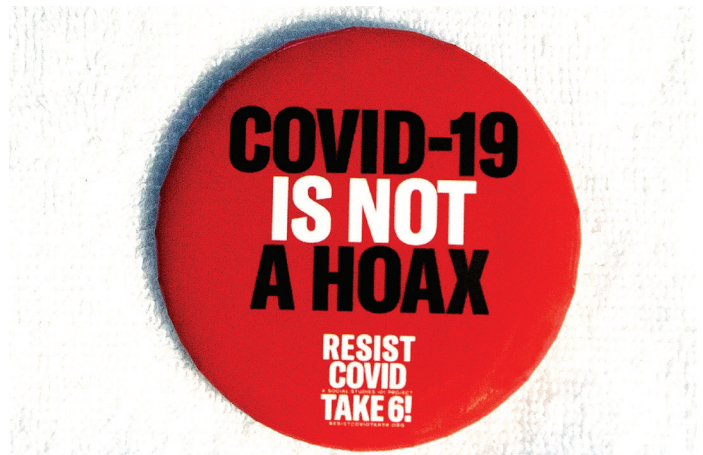
FRI Communication Platforms are listed below:

- FRIdays print magazine, distributed to 18,000 households in Far East Dallas (Issued April/September)
- NewsFlash, electronic newsletter, 2,200 email addresses. (Issued 2 x per month)
- Facebook, Instagram, Website, NextDoor (Ongoing)
- Direct emailing to group constituencies: 37 neighborhoods, 50 apartments, 17 schools, 30 faith communities



FRIdays, FRI's print magazine

- Health and Safety Fairs (Distributed 1,500 Resource Directories)
- Robo calling (10,000 residences)
- FRI Community Connection Town Hall Meeting (In-person in February, and virtually in September)
- Partnership with Resist COVID/Take 6! National communication campaign for Black, Brown, Native American communities (Distributed more than 100 posters, yard signs, postcards, 1000+ face masks)



Resist COVID/Take6! campaign button

- It is estimated that families living in our multi-family apartment complexes received (14) additional communications over a 7-month period related to services providing food, rental assistance, gas, mini-loans, digital-divide surveys, and most importantly, COVID-19 safety protocols and community testing locations. Information was also provided related to discount pharmacies, medical, dental, and behavioral services.
- U.S. Census efforts this year contacted FRI to help communicate to residents the importance of returning census data as well as helping to recruit community residents to work for the Census program.

Program Highlights

CONNECTION

Goal

Engage community advocates in opportunities to connect and improve the community and neighborhoods in Far East Dallas.

Outcomes

FRI followed all CDC and city-wide safety mandates regarding COVID-19 safety, social distancing restrictions, remote communications, and protocols. FRI is proud to report that despite these challenges, we demonstrated a respectable outcome in the number of volunteers and the hours they served.

- In 2020 (2,177) hours of community service were donated by more than 504 volunteers at a total value of \$54,642 to our neighborhoods, schools, and businesses in Far East Dallas.
- This year's annual Operation Beautification Litter Cleanup Event was hosted on March 7, 2020, a few days before the COVID-19 lockdown, Sponsored by City Credit Union, Young Chevrolet, and Frost Bank, 296 volunteers representing 12 neighborhoods, 5 schools, 2 apartments, 11 businesses/nonprofits, 8 service organizations, 2 faith communities, and the White Rock Hills Branch Library participated. These outcomes represent 923 volunteer hours valued at \$23,167. In addition to beautifying the community by collecting nearly 1,500 lbs. of trash, FRI partnered with White Rock Center of Hope and collected 102 lbs. of food that was distributed back into our community.
- FRI's expanded partnerships with area emergency service providers helped support the distribution of emergency food, rental assistance, and medical aid to hundreds of families in our community during this unprecedented time.
- FRI helped promote and provide volunteer support to FRI partner, LightChurch (2606 John West Road), for their annual Back-to-School backpack give away and food drive.
- During the holidays FRI helped orchestrate and coordinate food and toy drives with our emergency service providers, ensuring that these community supported efforts did not overlap.
- FRI facilitated the donation of (75) Thanksgiving meals, not only including turkeys, but also fresh produce through our partner, Services of Hope.
- FRI's deep relationships in the community helped connect City Hospital at White Rock with Nexus Recovery Center,

thus providing (75) Thanksgiving pies and turkeys to residents recovering from addiction.

- Our healthcare provider, Mission East Dallas continued to provide affordable medical, dental, and behavioral services to our community. FRI helped provide information during the pandemic to families needing these services.
- Owenwood Farm & Neighbor Space is a resource center serving Far East Dallas. FRI services included communications regarding monthly diaper distribution services that were conducted by drive-through events to ensure the safety of their families and volunteers.
- Since COVID-19, blood supplies in North Texas were dangerously low due to the cancellation of blood drives. FRI stepped up in August to partner with Carter BloodCare to host a blood drive to address this crisis, thus ensuring that patients who needed surgery, victims of car accidents and other emergencies received the blood they needed. FRI collected 19 pints of blood from our volunteers. We anticipate this to be an annual event in the future.



Food Drive at Wilkinson Center



Volunteers from the 2020 FRI Operation Beautification Litter Clean Up Event



FRI helped facilitate a summer food drive hosted by City Hospital @ White Rock in support of the food pantry at White Rock Center of Hope

Program Highlights

LEADERSHIP

Goal

Provide visionary leadership to the constituents of Far East Dallas and develop strong community leaders in every neighborhood.

Outcomes

FRI remains committed to the idea that one person can make a difference. That's why the organization is always looking for leaders in our community. Whether it is leading a project, hosting an event, chairing a committee, or attending a meeting, FRI's recruitment and training efforts in leadership are ongoing. Efforts this year were challenging due to the pandemic.

- (2) semi-annual Ferguson Road Initiative Community Connection Town Hall Meetings were held. Our February meeting was held in-person with more than 90 residents in attendance. Our September meeting was held virtually, with about 45 residents registering.
- (31) area businesses provided \$36,000 in advertising to underwrite the FRIday magazine.
- (255) FRI Community Connection members invested in FRI, thus sustaining operations and programs.



Residents from the February FRI Community Connection Town Hall Meeting



Councilmembers Adam Bazaldua and Paula Blackmon with School Board Trustee Dan Micciche at the February FRI Community Connection Town Hall Meeting

- \$60,122 was contributed by 239 investors during (2) North Texas Giving Day (NTGD) campaigns. The May campaign was an emergency fundraising effort to help nonprofits reeling from the impact of the Coronavirus. The September campaign occurred during our regularly scheduled NTGD fundraising campaign.
- (28) Founder's Circle Members made a 3-year pledge of support to FRI providing \$51,500 annually for 3 years. This helps establish an annual budget to support FRI operations.
- FRI promotes over 190 local businesses in our on-line business directory.
- FRI benefited from more than \$32,628 in pro bono professional consulting services and use of facilities.

Program Highlights

CRIME & SAFETY

Goal

Educate and engage community leaders to increase public safety and decrease crime in Far East Dallas.

Outcomes



Neighborhood Policing Officers regularly attend FRI Community Connection Town Hall Meetings

The Ferguson Road Initiative is committed to maintaining a safe community. Although in-person events and programs were impossible, our partners with the Dallas Police Department and Truett Area CrimeWatch continued to share crime and public safety information and tips to our community Crime Watch leaders.

- FRI maintains a database of FRI Community Leadership, Crime Watch/VIP & Public Safety organizations to educate leaders on crime trends and provide actionable information.
- (37) neighborhood Crime Watch and Volunteer In Patrol organizations were served by quarterly special public safety program in partnership with Truett Area Crime Watch. Due to the pandemic, only (1) training session was held on Gun Safety in January. The remainder were canceled due to the pandemic.
- With increased Crime Watch and Volunteer In Patrol programs, overall crime continues to decline, and FRI seeks funding opportunities for public safety initiatives.



Deputy Chief of Police (Northeast Subdivision) William Griffith addresses FRI community

Program Highlights

FINANCIAL LITERACY

Goal

Provide Volunteer Income Tax Assistance (VITA) services and financial literacy education to community residents.

Outcomes

FRI leadership was awarded the first IRS funded Volunteer Income Tax Assistance (VITA) program in Dallas 15 years ago. Although underutilized, the VITA and Earned Income Tax Credit (EITC) programs are among the U.S. Government's largest, needs-tested, cash benefits anti-poverty programs.

In 2016, 29% of Dallas households claimed EITC compared to 20% nationwide. Access to VITA sites is critical in helping filers access EITC and reducing reliance on costly (and predatory) tax preparation services, maximizing the financial benefits of the refunds, which for many low-income families may serve as the largest infusion of cash into their household in the year. VITA serves families earning \$57,000 annually or less with free assistance in preparing their own tax returns.

Because need is so great in our community, in 2019 FRI services were expanded to include an additional site at Lochwood Library (2021 Lochwood), managed by Sharing Life. In 2020 FRI support continued to both Lochwood Library, and our original site located at First Community Church (9120 Ferguson Road), managed by Foundation Communities.

FRI's extensive communication network was needed to help recruit qualified volunteer tax preparers, greeters, and translators. FRI used these same networks to communicate VITA and EITC help to low-income families. Because FRI has earned the trust of our community, we have deep roots in the Far East Dallas area with our constituency groups.



The FRI led VITA program serves a Burmese family in our community

Outcomes for 2020 were challenging as VITA had to initiate alternatives to in-person tax preparation by providing virtual and curbside service due to the COVID-19 crisis.

- FRI provided financial and staff support along with volunteer recruitment to our VITA site partners.
- (875) families received VITA services this year. This is a 46% decrease from last year, due to the pandemic.
- A combined total of \$2MM in tax return money stayed in Far East Dallas.
- \$535,854 in EITC helped residents avoid predatory lending.
- (135) hours of free financial education was provided for VITA families.



FRI VITA services have helped support Far East Dallas families for 14 years

Program Highlights

ECONOMIC DEVELOPMENT

Goal

Advocate for compatible, quality economic development to revitalize Far East Dallas and facilitate new opportunities with partners and investors.

Outcomes

This year the Ferguson Road Initiative rebranded the Ash Creek Greenbelt to a new name: CreekSide-Ash Creek Urban Reserve. CreekSide is a 4.49-acre of green space that will connect to the city's vast network of over 160 miles of hike and bike trails.

This stretch of natural blackland prairie runs parallel to the lower Ferguson Road corridor between Samuell Boulevard and Lakeland Drive. Nearby neighborhoods – an ethnically and economically diverse community of more than 35,000 residents – will be within a 10-minute walk to CreekSide, affording 17 neighborhoods, 15 multifamily communities and 4 schools easy access to St. Francis Park and White Rock Hills Park. Once the Trinity Forest Spine Trail is completed, CreekSide will connect to it, and also connect to the Santa Fe Trail, White Rock Lake, Lawnview Park, the Great Trinity Forest, and the Trinity River Audubon Center.

Activities related to the CreekSide development are listed below:

- Construction on the \$750,000 White Rock Hills Park was impacted by the pandemic, thus delaying plans for the grand opening. Expected to open in 2021, the park will begin to address the recreation gap that has existed along the lower Ferguson Road corridor in Far East Dallas, for over 30 years. The Park will serve thousands of children and their families.
- In January the demolition of the substandard and crime-magnet Crestwood and Casa Blanca Apartments was completed this year in preparation for the future White Rock Hills Recreation Center to be located to the west of the new White Rock Hills Park.
- FRI helped facilitate two new housing developments this year currently under construction: “Ferguson Townhomes” (10 townhomes, 1,600 sf, targeting middle-income families and professionals in the health, education, policing, and fire rescue industries and David Weekley’s “Grove at White Rock Hills” (35 single family townhomes, 1,600 sf, gated, priced at \$425,000)
- The Circuit Trail Conservancy (The Loop) will begin construction of the Trinity Forest Spine Trail in 2021. Connecting to the Santa Fe Trail, then Highland Road, and running south for 17 miles to the Trinity Audubon Center,

the trail will connect thousands of families that previously have had no access to the city trail system.. Thanks to county commissioner Dr. Theresa Daniel, the county has allocated \$3MM to fund the Ash Creek Trail, scheduled to begin design in 2023. The Ash Creek Trail will run from Highland Road to St. Francis Park.



White Rock Hills Park construction crew working on the White Rock Hills Park pavilion



David Weekley Grove @ White Rock Hills



Demolition of the Casa Blanca Apartments will make way for the future White Rock Hills Recreation Center



Trinity Forest Spine Trail Plan will connect Far East Dallas to the city-wide trail system

Program Highlights

OUR STAFF

**FRI is primarily volunteer driven.
We accomplish the work we do with (3) part-time staff.**



Andrea Hernandez (Membership/Special Events Administrator), Maria Valenzuela (Office Manager), and Vikki Martin (Executive Director)

AWARD WINNING

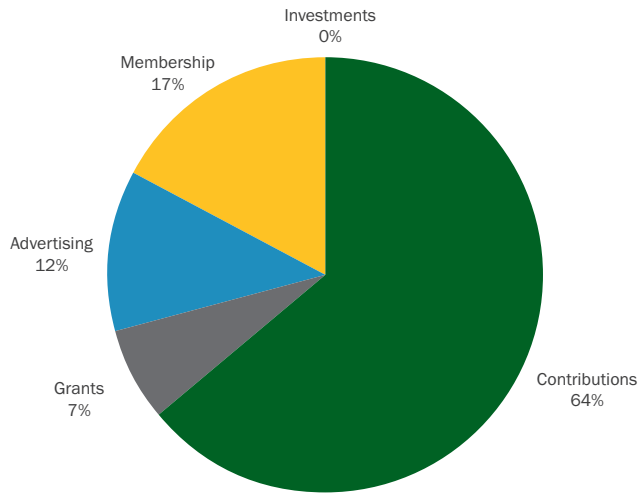
**FRI received recognition in 2020
by the East Dallas Networkers (EDN)**



Pictured: (left to right) Chuck Kobdish, Chairman, EDN, Vikki J. Martin, Executive Director, FRI

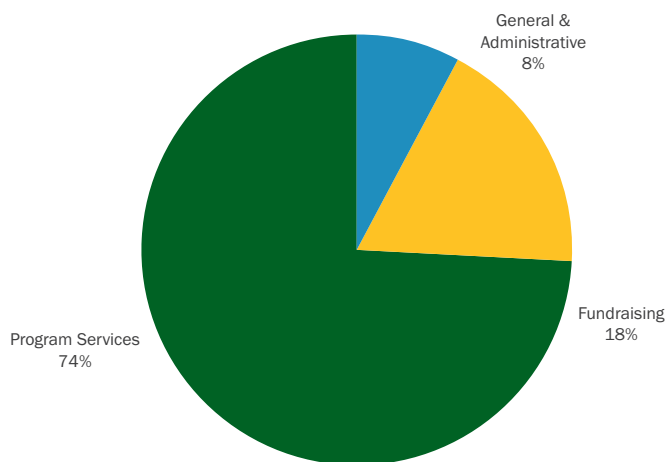
Financial Highlights

2020 REVENUE - \$209,360



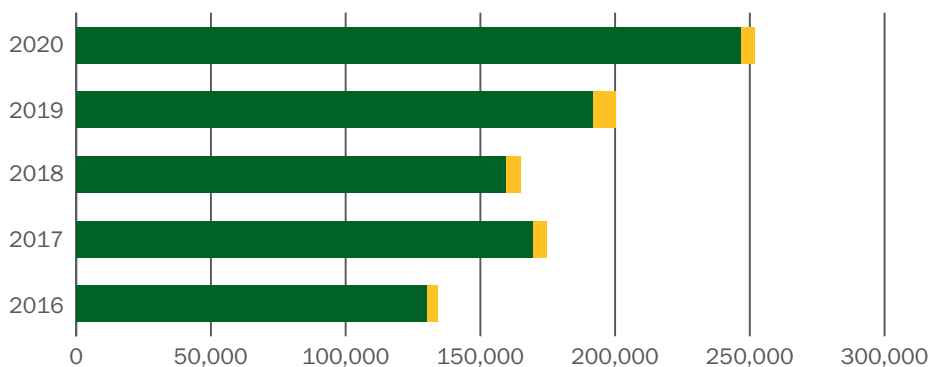
81% of FRI's support comes directly from membership fees and donations made during, Year-End Contributions and North Texas Giving Day.

2020 EXPENSES - \$150,693



FRI serves as a BACKBONE organization that facilitates and administrates partnerships and collaborative ventures to meet our shared community vision of a safe, vibrant and beautiful community for all.

FIVE YEAR BALANCE SHEET



	2016	2017	2018	2019	2020
Assets	\$130,221	\$169,402	\$159,240	\$191,733	\$246,771
Liabilities	\$3,730	\$5,422	\$5,633	\$8,543	\$4,914

FRI has made a successful transition from a government funded service provider, through USDOJ Weed & Seed, to an independent membership organization.

FRI's Financial Data is fully audited.

Data from 990 filed with IRS
*Audited

Investors

MEMBERS

HOUSEHOLD MEMBERSHIP

Adams, Brian and Tammy
Almond, Bradley and Cathy
Anderson, Diane
Bagley, Jim and Ann
Bennet, Jeff and Bridgette
Bernal, Tony and Liz
Boatman, Ken and Rebecca
Boling, Brad
Buskirk, John and Linda
Christie, Bill and Lucy
Clancy, Jerry and Sara
Collins, Mary Jane
Cox, Joan
Crockett, Jasmine
Davis, Cathy
Day, Mary
Downey, Linda
Dunklau, Brenda
Eaton, Nathan and Linda
Eddings, George and Bertha
Feinstein, Johnathan and Bellinger, Morgan
Fell, Delaina
Galleshaw, Jessica
Gallo, Carmelita
Gardner, Tom and Carol
Gillespie, Sam and Lori
Green, Anthony and Dolores
Greiner, Anice
Guerra, Rudy and Suze
Hargrave, Eugenia
Hartensteiner III, Charlie
Hatcher, Pat
Henderson, Scott and Karrie
Ikemba, Catherine
Ingraham, Mark
Johnson, Pilar
Johnstone, Bob and Isaly, Ellen
Jones, Shalita
Kerr, Neely
Kimbrough, Mary
King, Georgia
Koen, Ronald and Diana
Kowalsky, Sharon

Laivins, Juris and Carolyn
Lawler, Gary
LeBlanc, Patrick and Evangeline
Madison, Mari
Marshall-Henson, Chandra
May, Terry and Sandra
Mcferrin, Grace
McGann, Mike
Messerall, Brett
Myers, Judy
Nicolette, Matt and Elyse
Orr, David and Janet
Ortega, Sheila
Owens, Don and Carolyn
Pataro, Francisco and Gabriela
Patterson, Kimberly
Phillips, Elise
Prycer, Melissa
Rabatte, Leopoldo and Tanya
Raymond, Norma
Renfro, Mel and Liz
Royals, Dixie
Sanchez, Stephen
Scott Shaw, Kathy
Shaw, Steve and Debbie
Smith, Glenn
Smith, Shelby
Smith, Stanley
Stettler, John and Helen
Streeter, Larry and Jean
Swanson, Harry
Tang, Chih Huan
Tony, Bryan
Trosclair, Wayne and Joan
Valenzuela, Moises and Maria
Vasquez, Dan and Laura
Walker, Susan
Webb, Leslie
Weber, Nancy
Welsh, Fred and Daisy
Whitford, Mark
Williams, Paul and Williams Heather
Wilson, Diana
Wilson, Jesse and Lee Ann Wilson
Wisness, Mark
Zanzalari, Daniellen

PATRONS

Albertson, Bree
Anderson, Diane
Arthur, Dick and Kathleen
Ayala, Evangelina
Bacsik, Rebecca
Balentine, Ron and Dunn, Julie
Beispiel, Barry and Northcutt, Connie
Benson, Ken and Stowe, Martha
Bernal, Tony and Liz
Bernstein Ken and Clay, Barbara
Bert, John and Dee
Birabil, Lorraine
Brown, Robert and Martin, Vikki
Cantrell, Ken and Pearce Teri
Cheek, Jeff and Elizabeth
Chitsey, Debbie
Chris, Rebuck
Clayton, Daniel Davis
Coldwell, Scott and Deb
Coleman, Bill and Mirella
Cooper, Leela
Cooper, Pamela
Covert, Lisa
Cuban, Jeff
Daulton, Tom and Janet
Davis, Bob
Dix, David
Dobson, Daniel
Doug, Hunt
Eaton, Nathan and Linda
Ellis, George and Anne
Farrell, David
Fontana, Larry and Hefley Janis
Galliford, Grant and Jina
Gallo, Carmelita
Garcia, Gary and Mary
Gary, Hasty
Gillespie, Sam and Lori
Goodwin, Kerry and Rosemary
Green, Anthony and Dolores
Hanagan, Brian
Herrick, Chuck
Herring, Don
Hill, William and Sharon
Hillin, Betty

Hodge, Chuck and Darla
Hopper, John and Susan
Jackson, Christopher and Cari
Jenkins, Bill and Pamela
Johnson, Carl and Pat
Johnson, Cyrus and Jan
Jones, Dr. and Mrs. William G.
Kerr, Neely
Klein, Ronald and Debra
Latson, John and Bernadette
Lovelady, Shawn
Micciche, Dan
Millican, Gary and Tina
Montagna, Gary and Giselle
Moreno, Jose
Moseley, Neil and Elizabeth
Nemchenko, Andriy
Nicolette, Matt and Elyse
Ortman, Daniel and Linda
Peycke, Mark and Karen
Pfundheller, Rebecca
Pierce, Dr. Dorothy
Quigley, Raymond and Martha
Reed, Becky
Renfro, Mel and Liz
Richard, Albert and Mona
Ritter, Phil
Rodriguez, Jaime and Parra, Carmen
Schaar, Allen and Mary
Schmitt, Gregg and Christie
Shaw, Steve and Debbie
Sheshene, Tom
Smith, Glenn and Dawn
Smith, Shelby
Snoyer, Jeff and Lynn
Stanford, John and Bette
Starita, Paulette
Tealer, Dr. Eddie
Van Buskirk, John and Linda
VanOort, Elizabeth and Boone, Mitchell
Vogt, Lynn
Walker, Susan
Wildenthal, Kern and Marnie
Wuertz, Phil and Mary

NEIGHBORHOOD ASSOCIATIONS

Claremont Addition NA - CANA
Enclave at White Rock HOA

Forest Hills NA - Forest Hills Security Program
Greater Casa View Alliance
Little Forest Hills NA

CHURCHES

Bethel Baptist of White Rock
First Community Church
Light Church
Mountain View Church of Christ
St. Mark Presbyterian Church

NONPROFITS

Dallas Arboretum
East Dallas Networking
Inspiring Tomorrow's Leaders
Nexus Recovery Center
Roy Stanley Masonic Lodge No. 1367
White Rock Center of Hope, Inc
Wilkinson Center
Worrall Foundation

BUSINESS MEMBERSHIP - LARGE

City Credit Union
City Hospital at White Rock
CMIT Solutions
David Weekley Homes Dallas Division
Frontline ER
Frost Bank
Karrington & Co.
Lakehill Preparatory School
Lakeland Hills Senior Living
Lone Star Credit Union
McDonald's/SLI Enterprises
Mission East Dallas
MSL Healthcare - Le Rêve
Resource One Credit Union
Uplift Education

BUSINESS MEMBERSHIP - MEDIUM

Dooley Homes
Farmers Insurance-Kelly Harris Agency
Joe's Cleaners
Karrington & Co.
MLC Insurance
Walton's Garden Center
White Rock Alehouse & Brewery

BUSINESS MEMBERSHIP - SMALL

20 Feet Seafood Joint
78 Backyard Concepts
Access Self Storage & Truck Rental
Blue East Management
East Dallas Veterinary Clinic
Farmers Insurance-Kelly Harris Agency
Grant W. Galliford Insurance Agency
Lira Bravo Law, PLLC
Liz Renfro Realtor
Mari Madison Design Strategies
Meyer's Pride Roofing

\$1,000 FOUNDER'S CIRCLE

Scheuerle, Dr. Angela
Bishop Lynch High School
Casa Pacifica Apartments
City Credit Union
City Hospital at White Rock
Micciche, Dan
Directions
East Dallas Veterinary Clinic
Tealer, Dr. Eddie
John and Anne Griggs
Karrington & Co.
Lira Bravo Law, PLLC
Mission East Dallas
Presidium Group - Villas at Tenison Park
T. Robert and Bette J. Martin, In Memoriam
Young Chevrolet

\$1,500 FOUNDER'S CIRCLE

Owenwood Farm & Neighbor Space

\$2,500 FOUNDER'S CIRCLE

Access Self Storage & Truck Rental
Lone Star Credit Union
Uplift Education
White Rock Hills Townhomes Apartments

\$5,000 FOUNDER'S CIRCLE

McDonald's/SLI Enterprises
MSL Healthcare - Le Rêve

\$10,000 FOUNDER'S CIRCLE

AmeriSouth Realty Group

DONORS

ANNUAL

Anonymous
Eaton, Nathan
Goodwin, Kerry and Rosemary
Herrick, Chuck
Hoffmann, Laura
Lawler, Gary
Lazo, Edith

BOARD PLEDGE

Clayton, Daniel Davis
Coleman, Bill
Hasty, Gary
Jackson, Christopher
Nicolette, Matt
Ortman, Daniel
Rebuck, Chris
Reed, Becky
Sosa Green, Dolores
Van Buskirk, John

END OF YEAR CAMPAIGN

Bagley, Jim and Ann
Black, Ann
Brown, Robert Brown and Martin, Vikki
Goodwin, Kerry and Rosemary
Johnstone, Bob and Isaly, Ellen
Lawler, Gary
Micciche, Dan

NORTH TEXAS GIVING TUESDAY NOW

Anonymous (24)
Albertson, Bree
Anderson, Diane
Bagley, Jim and Ann
Balentine, Ron and Dunn, Julie
Beispiel, Barry and Northcutt, Connie
Bert, John and Dee
Boatman, Ken and Rebecca
Clancy, Jerry and Sara
Coleman, Bill and Mirella
Cuban, Jeff
Diener, Maranda
Downey, Linda
Dryden, Mel and Sara
Eaton, Nathan and Linda
Ellis, George and Anne

Family Outreach East Dallas
Ferguson Gilman, Harriet
Fink, Marie Ann
First Community Church
Garcia, Gary and Mary
Gardner, Tom and Carol
Goodwin, Andrea
Goodwin, Kerry and Rosemary
Greg, Cohen
Habicht, Wendy
Hanagan, Brian
Harry, Swanson
Hopper, John and Susan
Houle, Ericka
Jackson, Christopher and Cari
Jenkins, Pamela
Johnson, Jan
Johnston, Bob and Isaly, Ellen
Jones, Dr. and Mrs. William G.
Latson, John and Bernardette
Lawler, Gary
Lone Star Credit Union Employees
Lovelady, Shawn
Marshall-Henson, Chandra
Martin, Vikki
McGann, Mike
Micciche, Dan
Montangna Family
Moseley, Neil and Elizabeth
Mrozek, Mark and Claire
Nicolette, Matt and Elyse
Nunez, Nayi
Orr, David and Janet
Ortman, Daniel
Patterson, Kimberly
Quigley, Ray and Martha
Rebuck, Chris and Melony
Riggs, Paul and Scott Shaw, Kathy
Schaar, Allen and Mary
Schmitt, Christie and Gregory
Shaw, Steve and Debbie
Stanford, John and Bette
Stettler, John and Helen
Tang, Chih Huan
Valenzuela, Moises and Maria
Van Buskirk, John and Linda
Vasquez, Dan and Laura
Walker, H Susan
Webb, Catherine

Wegmann, Rebecca
Wisness, Mark

NORTH TEXAS GIVING DAY

20 Feet Seafood Joint
Anonymous (23)
Anderson, Diane
Bacsik, Rebecca
Bagley, Jim and Ann
Balentine, Ron and Dunn, Julie
Benson, Ken
Bernal, Tony and Liz
Blue East Management
Boatman, Ken and Rebecca
Bob Johnstone, and Isaly, Ellen
Bonfadini, Kimberly
Boone, Mitchell, Eli and Cash
Brown, Rob and Martin, Vikki
Cantrell, Ken and Pierce, Teri
Chitsey, Debra
Clayton, Daniel Davis
Cohen, Greg
Coldwell, Scott and Deb
Coleman, Bill and Mirella
Covert, Patirck and Lisa
Cox, Joan
Crockhom, Mary
Daniel, Theresa
Daulton, Jan
Diener, Maranda
Dryden, Mel and Sara
Dunklau, Bill and Brenda
Eaton, Nate and Linda
Ellis, George
Esparza, Josh and Sun, Victoria
Ferguson Gilman, Harriet
Fontana, Larry and Hefley, Janis
Galleshaw, Jessica
Gardner, Tom and Carol
Gillespie, Sam and Lori
Goodwin, Kerry and Rosemary
Hanagan, Brian
Hargrave, Eugenia
Hefley, Larry and Janis
Herring, Jr., Don
Hodge, Chuck and Darla
Hopper, John and Susan
Jackson, Christopher and Cari
Jenkins, Pamela
Johnstone, Bob and Isaly, Ellen

Kafka, Janet
 King, Sidney and Georgia
 Kowalsky, Sharon
 Laivins, Carolyn
 Latson, John and Bernadette
 LightChurch
 Lira Bravo, Monica
 Little Forest Hills NA
 Lloyd, Erica
 Lovelady, Shawn
 Mari L Madison Design Strategies
 Marshall-Henson, Chandra
 May, Terry and Sandra
 McCain, Demetria
 Mcgann, Mike
 Micciche, Danel
 Milazzo, Kristal
 Millican, Gary and Tina
 Moseley, Neil and Elizabeth
 Mowl, Josh and Linda
 Mrozek, Mark
 Murgas, Kathryn
 Nemchenko, Andriy
 Northcutt, Connie
 Nunez, Nayi
 O'Halloran, Patrick and Covert, Lisa
 Orr, David and Janet
 Ortega, Sheila
 Ortman, Daniel and Linda
 Oswald, Paul and Williams, Heather
 Patterson, Kimberly
 Peycke, Mark and Karen
 Rabatte, Polo and Tanya
 Rebuck, Chris and Melony
 Reed, Becky
 Renfro, Mel and Liz
 Richmond, Josh and Lindsey
 Sanchez, Stephen
 Scheuerle, Dr. Angela
 Schmitt, Gregory and Christie
 Shaw, Steve and Debbie
 Sheshene, Tom
 Smith, Glenn and Dawn
 Snoyer, Jeffrey
 Sosa Green Dolores
 Stanford, John and Bette
 Starita, Paulette
 Stettler, Helen
 Stevens, Cindy

Swanson, Harry
 Tafur Fulbright, Maria
 Tanner, Desi
 The Dobson Family
 The Montagna Family
 Valenzuela, Moises and Maria
 Vanbuskirk, John and Linda
 Walker, Susan
 Webb, Catherine
 Webb, Leslie
 Weber, Nancy
 Weeden, Brian and Tammy
 Wegmann, Mark and Rebecca
 Welsh, Fred
 Wildenthal, Kern and Marnie
 Woods, Julia

FOUNDATIONS, EMPLOYER MATCH, GRANT, ONLINE

Amazon Smile Foundation
 Communities Foundation of Texas
 Network For Good
 PayPal Giving Fund
 Perot Foundation

IN-KIND DONATION

Access Self Storage & Truck Rental
 Carmelita Gallo
 City Hospital at White Rock
 Ferguson Donuts
 Frontline ER
 Frost Bank
 Karrington & Co.
 Kash Data Consulting, LLC
 Lone Star Credit Union
 Mari Madison Design Strategies
 McDonald's/SLI Enterprises
 Minuteman Press Casa Linda
 Mission East Dallas
 Resource One Credit Union
 Signage Systems
 White Rock Hills Apartments

ADVERTISERS

Access Storage
 City Credit Union
 City Hospital at White Rock
 CMIT Solutions
 David Weekly Homes Dallas Division

East Dallas Vet Clinic
 Farmers Insurance Kelly Harris Agency
 Ferguson Road Townhomes
 Frontline ER
 Frost Bank
 Grant W. Galliford Allstate Insurance
 Jasmine Crockett Campaign
 Joe's Cleaners
 Lakehill Preparatory School
 Lakeland Hills Senior Living
 Liz Renfro Realtor
 Lone Star Credit Union
 Lone Star Synthetic Turf
 Lorraine Birabil Campaign
 McDonalds/SLI Enterprises
 Metro Paws Animal Hospital
 Mission East Dallas
 MLC Insurance
 MSL Healthcare
 Myers Pride Roofing
 Resource One Credit Union
 The Linden Grove Theatre Co
 Theresa Daniel Campaign
 Uplift Prep. School - WRH
 Walton's Garden
 White Rock Alehouse & Brewery

SPONSORS

City Credit Union
 Frost Bank
 Young Chevrolet